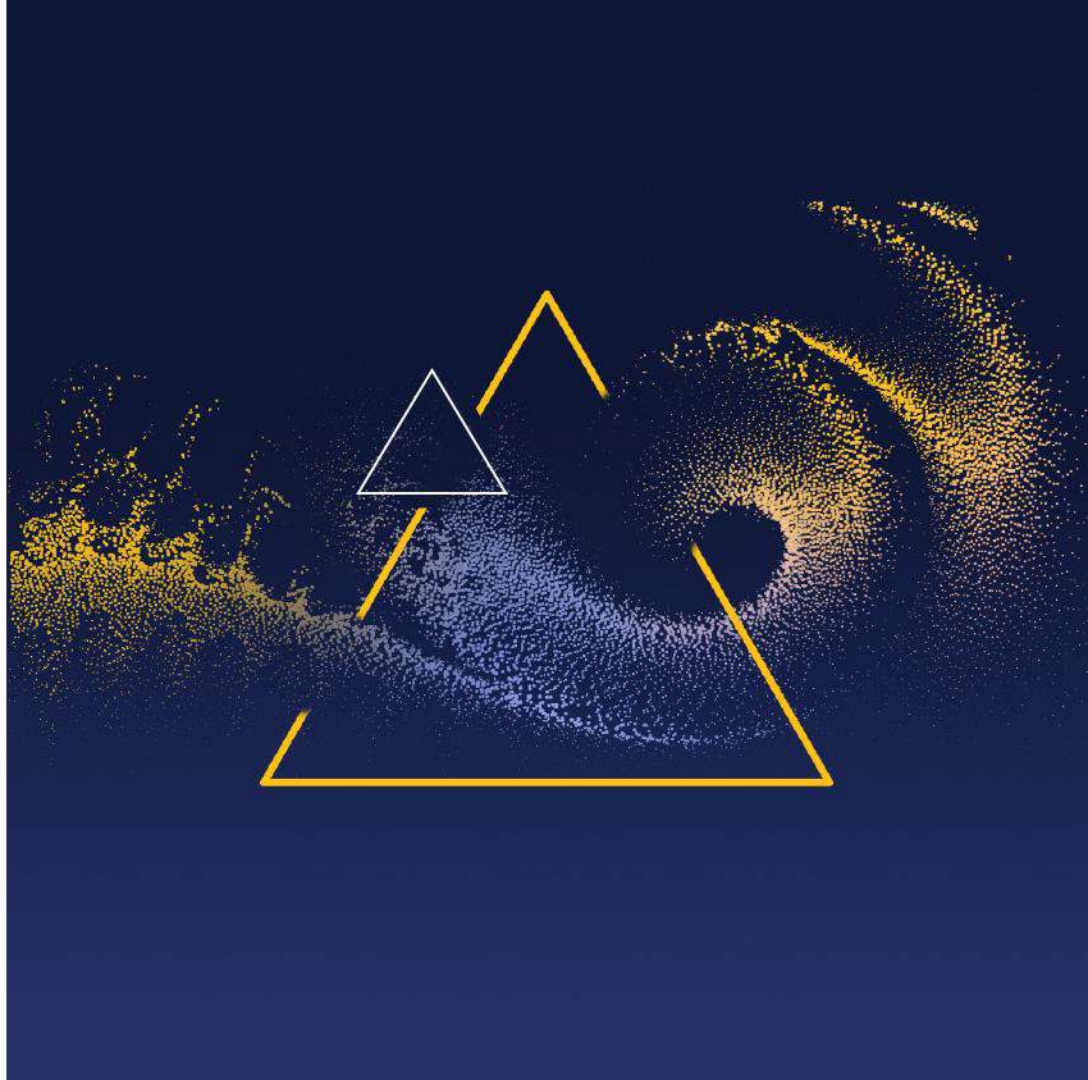


MBG CORPORATE SERVICES

# CORPORATE PROFILE



MBG CORPORATE SERVICES

# CORPORATE PROFILE



MBG CORPORATE SERVICES

# CORPORATE PROFILE



## YOUR GLOBAL BUSINESS EXPERTS

GERMANY

CHINA

JAPAN

QATAR

UAE

OMAN

INDIA

SINGAPORE

Coverage **Europe, Middle East & Asia**

Headquartered in **Singapore**

Established in **2002**

**5K+** | clients globally

**100+** | Fortune 500 clients served

**600+** | professionals and experts employed

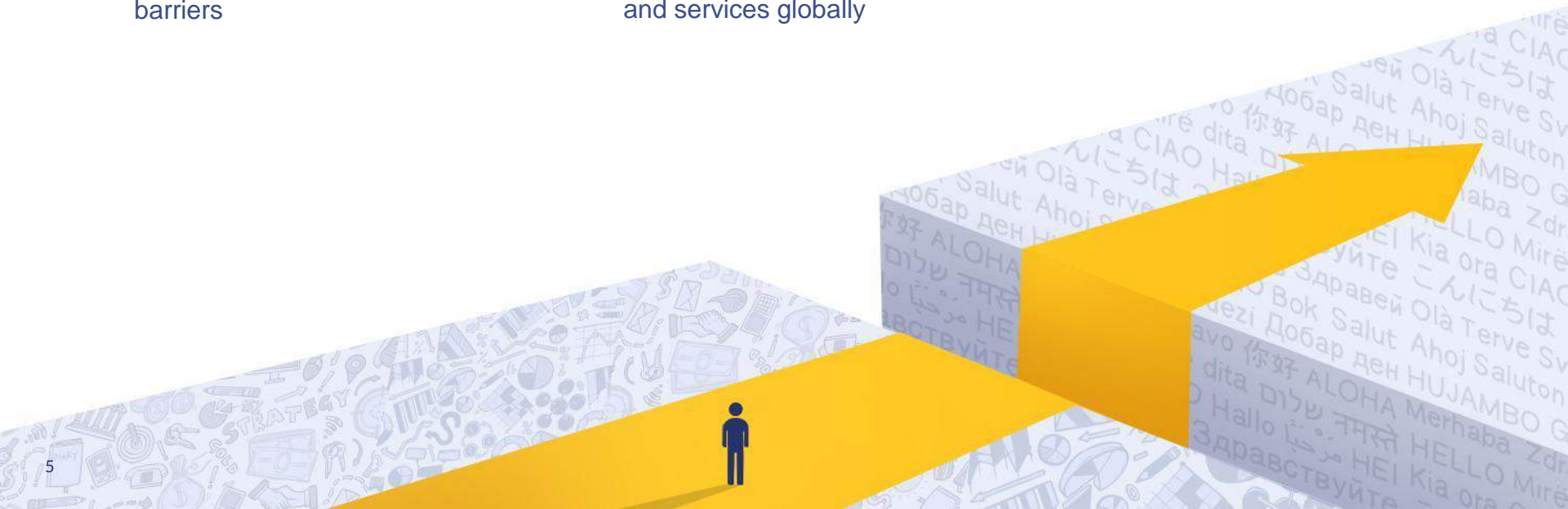
**16** | offices in 8 locations

**20+** | nationalities

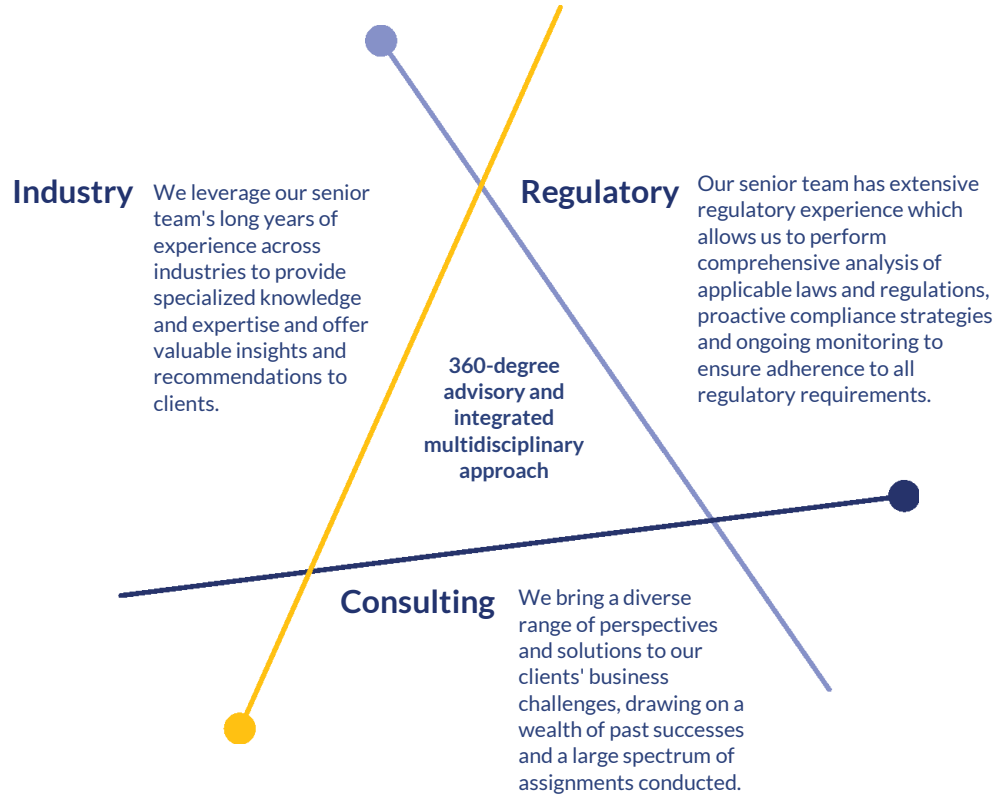
## FOREIGN ENTERPRISE GROUPS | B2B & B2G



- Bridging technical, cultural and linguistic barriers
- Support in sourcing technologies, products and services globally



## WHAT MAKES MBG DIFFERENT?



## MULTILINGUAL MULTI-REGION WEBSITE



GLOBAL



UAE - EN



UAE - AR



QATAR - EN



QATAR - AR



INDIA



JAPAN



GERMANY



CHINA



SINGAPORE



LEGAL

[MbgCorp.legal](http://MbgCorp.legal)



BUSINESS  
SETUP

[MbgBusinessSetup.com](http://MbgBusinessSetup.com)



VE MBG

[OneMbg.com](http://OneMbg.com)



French -  
upcoming

## REGIONAL SOCIAL MEDIA CHANNELS



UAE



INDIA



QATAR



### OTHERS



WECHAT



X



WHATSAPP  
CHANNEL



YOUTUBE



WEIXIN

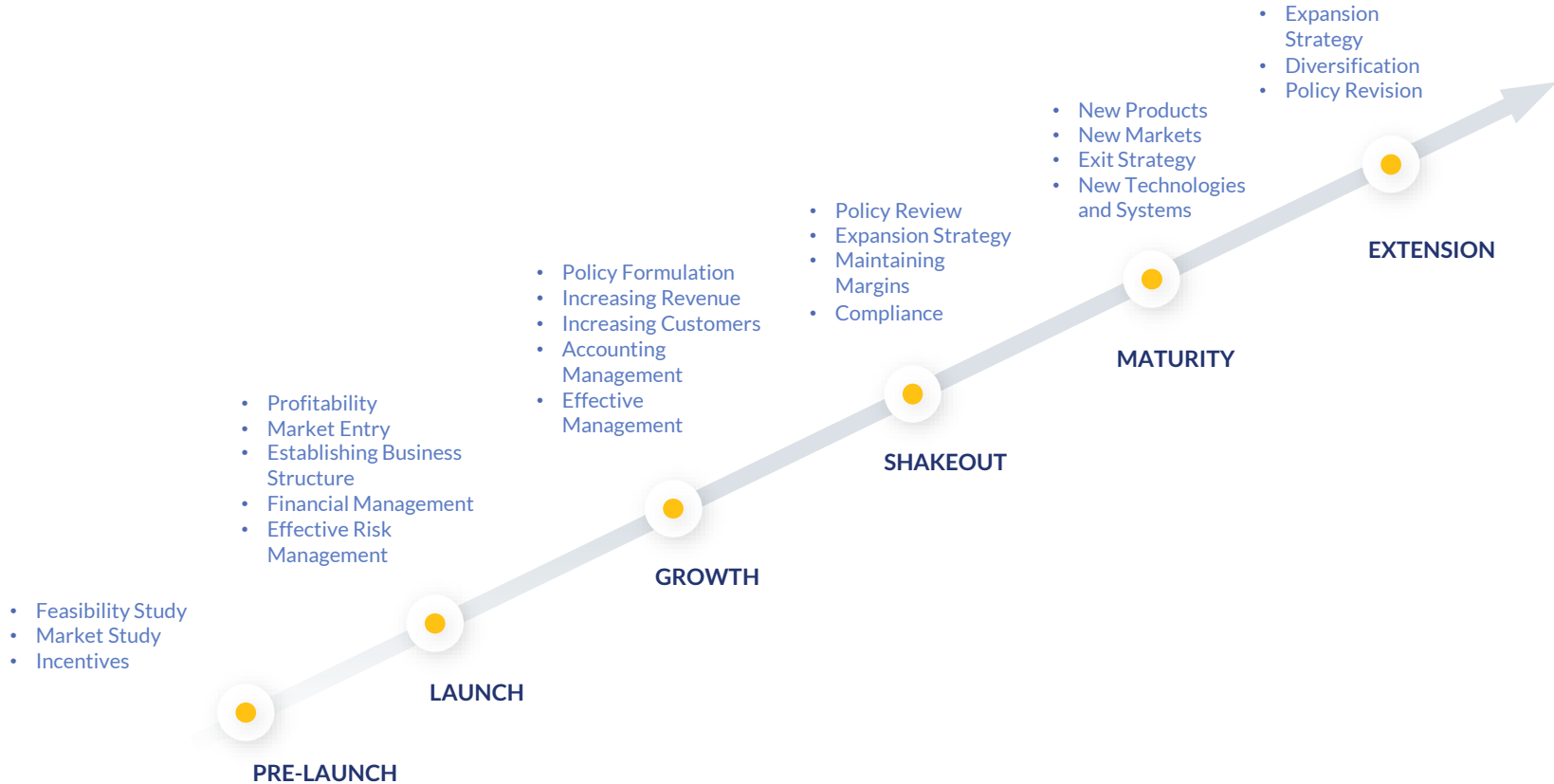


TOUTIAO



ZHIHU

# END-TO-END SOLUTIONS FOR BUSINESS GROWTH





## OUR SERVICES

### MARKET RESEARCH

- Consumer Behavior and Market Segmentation Studies
- Brand Perception, Tracking, and Positioning Studies
- Customer Satisfaction and Loyalty Studies / Sentiment Analysis
- Focus Groups and In-depth Interviews
- Usability Testing and User Experience Research
- Customer Journey Mapping

### MARKET ENTRY

- Market Feasibility Study
- Market size & Potential
- Customer & Competitor Analysis
- Product Mix Strategy
- Regulatory Scenario
- Evaluation of Entry Strategies
- Merger & Acquisition (M&A)
- Importer / Distributor Search Market Feasibility Study
- Legal Structure Creation

### TRANSACTION ADVISORY SERVICES (TAS)

- Market/Location Feasibility Study
- Preparation of Teaser and IM
- Financial Due-diligence
- Operational Due-diligence
- Transaction Valuation
- Post Merger Integration
- Transaction Tax
- Transaction Legal
- Merger And Acquisition/Joint Venture Support

## OUR SERVICES

### RISK ADVISORY SERVICES (RAS)

- Internal audit
- Business health check
- Dealership audit/review
- SOP development and refinement
- ICFR documentation and testing
- Entity-level controls policy drafting
- Business process re-engineering
- Transaction monitoring support
- Asset verification services
- Scrap validation services
- Forensic advisory services:
  - Corporate intelligence
    - Integrity due-diligence
    - Third party due-diligence
  - White-Collar investigation

### TAXATION ADVISORY & COMPLIANCE SERVICES (TACS)

- International tax services
- Corporate tax services
- Transfer pricing services
- Personal tax services Indian nationals
- Expatriate tax services
- Trade remedies under anti-dumping and countervailing duties
- Authorized economic operator program
- Custom valuation and assistance in SVB investigation
- Representation on DGFT matters foreign
- Trade policy procedures incentives
- Indirect tax litigation
- Assistance in GST departmental audit
- GST refunds
- GST compliance review
- GST advisory and compliance

## OUR SERVICES

### FINANCIAL REPORTING & ASSURANCE SERVICES (FRAS)

- GAAP transformation
- Accounting advisory support
- IPO & capital markets
- Consolidation and closures
- Audit support
- Financial instruments
- IND-AS review

### CORPORATE & OTHER REGULATORY ADVISORY (CORA)

- M&A, JVs and general corporate
- Fraud recovery and settlements
- Legal assistance, disputes and arbitration
- Employment and labor
- Capital market & security laws
- Real estate matters
- Regulatory approvals
- Competition laws
- Bankruptcy and insolvency
- International trade and WTO disputes
- Commercial and EPC contracts
- Secretarial compliances

### HUMAN CAPITAL CONSULTING (HCC)

- People development
- HR technology
- Payroll management
- Compliance and best practices
- Compensation benchmarking and structuring
- HR strategy and organization development
- Performance management and training

## DIVERSIFIED INDUSTRIES



Aviation



Construction



Clean technology



Education



Hospitality



Healthcare



Information technology



Insurance



Iron and steel



Manufacturing



Petroleum, oil and gas



Retail



Shipping and logistics



Trading and services



Travel and tourism



Transportation



We provide customized delivery with a commitment for an innovative value proposition to enable growth with compliance and the focus to build long-term sustainable relationships.

**Mayur Batra**



## LEADERSHIP PROFILE



**MAYUR BATRA**  
Executive Chairman

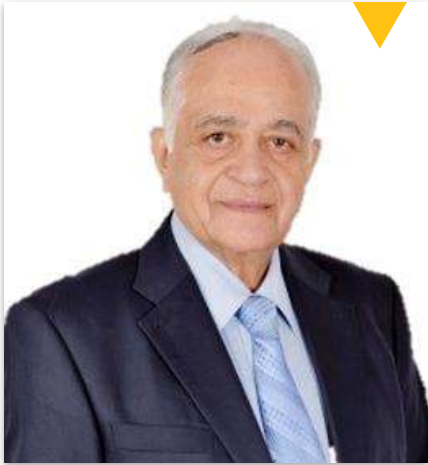
**Mayur Batra is the Founder, President and Executive Chairman of MBG Corporate Services.**

**Mayur** has over two decades of experience in advising multinationals and enterprises on a spectrum of matters relating to foreign investment policy, cross-border transactions, tax controversy, foreign exchange control regulations and corporate laws and business re-structuring. He has expertise in the area of international tax policy and contentious cross-border tax treaty issues in overseas territories. He has been actively involved in obtaining various statutory and regulatory approvals, licenses, clearances etc., from statutory agencies. With his vast experience he brings in-depth expertise of converting complex business transactions into viable profitable propositions.

**Mayur** has played an instrumental role in expanding the firm's practice over diverse service verticals in the UAE region including its empanelment as an ICV-certifying approved body by ADNOC. Prior to setting up MBG, Mayur has served as the Chief Financial Officer at the corporate office of one of the largest Japanese Trading houses. He has also served as the General Secretary for a term of three years at the Japanese Chamber of Commerce and Industry in New Delhi.

**Mayur** has over the years received several accolades and recognitions. He is a qualified Chartered Accountant & Cost and Works Accountant from India.

## LEADERSHIP PROFILE



**N. P. SAHNI**  
Chief Advisor & Mentor

**N.P. Sahni** has undertaken important assignments in India and abroad as Vice Chairman - Income Tax Settlement Commission, Director General of Income Tax (Investigation), Chief Commissioner of Income Tax, Joint Secretary (Foreign Tax Division), Member-Management Committee of Commonwealth Association of Tax Administrators London (UK), besides holding Tax Policy and Double Taxation Avoidance Agreement with different countries.

He has also held a senior position in the Revenue Department of Government of India & Directorate of Enforcement (Foreign Exchange Regulations).

## LEADERSHIP PROFILE



**JANARDAN SINGH**  
Chief Operating Officer

**Janardan Singh** is COO at MBG Corporate Services and has over 15 years of post-qualification experience in consulting dealing with matters pertaining to corporate tax, international tax, transfer pricing, expatriate tax and due diligence.

**Janardan** has focused on International Tax and Corporate Tax issues related to EPC contracts/project office operations as his area of specialization. He possesses insight into various issues faced by multinational enterprises operating in India.

**Janardan** has worked on issues related to permanent establishment, source-base taxation of income such as royalty/fee for technical services (FTS), due diligence and he has significant experience in the area of inbound investments and cross border advisory.

He has done extensive representations at the assessment and appellate level on the issues of permanent establishment, expatriates taxation and taxation on the basis of source rules for several corporate entities and individual expatriates.

**Janardan** is a qualified Chartered Accountant (CA) of India and holds the degree of Bachelor of Commerce (B. Com) from University of Delhi, India.



## LEADERSHIP PROFILE



**Dr. JUSTICE VINEET KOTHARI**  
Senior Advisor

**Dr. Kothari** is a senior advocate designated by the Supreme Court of India, specializing in Constitutional Courts. He has expertise in domestic and international tax law, service law, corporate and insolvency law and property and family law. He is an arbitrator with several High Courts and associated with arbitration and mediation centers. Dr. Kothari has served as an acting Chief Justice of the Gujarat and Madras High Courts, and as a judge in multiple High Courts. He is involved in international legal associations and frequently speaks at conferences.



**AMAL TRIPATHI**  
Partner Legal & Secretarial

**Amal** holds degree of Bachelor of Commerce and is a Member of Institute of Company Secretaries of India (ICSI). He has almost 20 years of experience in dealing with the matters pertaining to corporate laws, financial services, due diligence, merger/amalgamation/take-over, initial public offer, legal restructuring, debt /loan syndication accounting review, internal audit, statutory audit, etc. He is associated with MBG Corporate Services since August 2011.



**LUV MALHOTRA**  
Deputy COO & Partner

**Luv** is a qualified Company Secretary and a Law Graduate with more than 13 years of post qualification experience in advising various domestic and multinational clients in the field of general corporate advisory involving Foreign Exchange Laws, Foreign Trade Laws, Companies Act, 2013 and Insolvency and Bankruptcy Code. He is handling various transactions including but not limited to due diligence, governance checks, mergers, acquisitions, joint ventures, strategic alliances, employees restructuring and shutting down of companies.

## LEADERSHIP PROFILE



**ITI GOEL**  
Director  
Human Capital Consulting



**RASHI PALIWAL**  
Associate Partner  
Taxation Advisory &  
Compliance Services



**DEEPAK DEWAN**  
Director  
Taxation Advisory &  
Compliance Services



**SAURABH SHRIVASTAVA**  
Associate Director  
Risk & Transaction Advisory



**AMAN CHHABRA**  
Director  
Taxation Advisory &  
Compliance Services



**HIMANSHU SURYAN**  
Assistant Director  
Taxation Advisory &  
Compliance Services



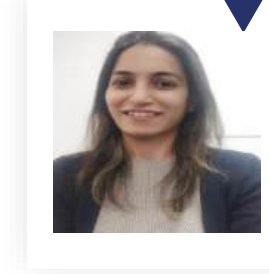
**RUCHIKA JAIN**  
Assistant Director  
Direct Tax



**NIGAM GOYAL**  
Senior Manager  
Taxation Advisory &  
Compliance Services



**PIYUSH JHAWAR**  
Senior Manager  
Taxation Advisory &  
Compliance Services



**RADHIKA KESARWANI**  
Senior Manager  
Taxation Advisory &  
Compliance Services

## LEADERSHIP PROFILE



**ANKIT BHUTANI**  
Senior Manager  
Taxation Advisory &  
Compliance Services



**SHIVANAND SINGH**  
Principal Associate  
Litigation



**KRITIKA SARASWAT**  
Senior Manager  
Market Research

## RELATIONSHIP MANAGEMENT



**SACHIN JAYACHANDRAN**  
Partner  
Business Development



**JITESH AZAD**  
Director  
Business Development



**PRATEEK ARORA**  
Assistant General Manager  
Business Development



**HARSHDEEP SINGH**  
Senior Manager  
Business Development



**MIAO WANG**  
Manager  
Business Development



**RATIKA DHAWAN**  
Manager  
Business Development



**KARTIK NITNAWARE**  
Senior Executive  
Business Development



**CHHAYA CHAUDHARY**  
Executive  
Business Development

## RELATIONSHIP MANAGEMENT



**VAISHNAVI GEHLOT**  
Assistant Manager  
Business Development



**SIDDHARTH KUMAR**  
Manager  
Business Development



**SATVIK DHAKRE**  
Executive  
Business Development

## FOREIGN ENTERPRISE TEAM



**AKIKO YAMANE**  
 Partner  
 Foreign Enterprise Team



**LYDIA WUMMEL-TYAGI**  
 Partner  
 European Enterprise Team &  
 Marketing



**ISABELLA SUN**  
 General Manager  
 Chinese Enterprise Team

## OUR JAPANESE ENTERPRISE TEAM



**AKIKO YAMANE**  
 Partner  
 Japan & China Enterprise Team



**MINAMI SUZUKI**  
 Executive  
 Japan Enterprise Team

Since the inception of MBG, our Japan Enterprise Group has been at the core of our evolution journey.

Our robust Japanese clientele and the FDI success are testaments to the immense contribution from our Japanese cohorts.

# THANK YOU!

## INDIA

New Delhi  
Gurugram  
Chennai  
Bengaluru  
Mumbai

## UAE

Abu Dhabi  
Dubai  
Sharjah  
Ras Al Khaimah

## OMAN

Muscat

## QATAR

Doha

## JAPAN

Tokyo

## CHINA

Beijing

## GERMANY

Stuttgart

## SINGAPORE

Singapore

## FOLLOW US

On our social channels



[www.mbgcorp.com/ae](http://www.mbgcorp.com/ae) [uae@mbgcorp.com](mailto:uae@mbgcorp.com) +971 52 640 6240

© Copyright 2025, MBG Corporate Services. All Rights Reserved